

WHITELAND

GLOBAL OUTLOOK | INDIAN VALUES

THE  ASPEN

ABOVE IT ALL



FROM PATAUDI

TOWARDS DWARKA →

← TOWARDS JAIPUR

NH-48

HYATT REGENCY

DWARKA EXPRESSWAY

DWARKA EXPRESSWAY

CPR

CLOVERLEAF FLYOVER

HERO HONDA CHOWK

OLD DELHI GURGAON ROAD



IGI AIRPORT

NH-8

HALDIRAM

- DLF CORPORATE GREEN
- AMERICAN EXPRESS CAMPUS

RAJIV CHOWK

TOWARDS DELHI →

THE SPEN

URBAN CUBES 71

DLF ALAMEDA

NH-8

• AMBIENCE MALL

CYBER CITY

TOWARDS DELHI →

ARAVALLI RANGE

LEOPARD TRAIL

TO DMIC CORRIDOR

GOLF COURSE EXTENSION ROAD
PROPOSED METRO LINE

RAPID METRO

GOLF COURSE ROAD

MG ROAD



N



- Strategically Located on Growth Corridor, SPR

With proximity to:

- NH-8
- Cloverleaf Flyover
- Dwarka Expressway
- Manesar

With multiple existing access routes.

A photograph showing several people in business attire gathered around a table, reviewing architectural blueprints. One person is pointing at a specific area on the plan, while another uses a pen. A magnifying glass and a ruler are also visible on the table. The background shows stacks of wooden blocks. The text "Design & Master Planning" is overlaid in a white serif font on a semi-transparent dark rectangle.

Design & Master Planning



Principle Design Consultant

**Architect
Hafeez
Contractor**

(Padma Bhushan Awardee)



Indian Green Building Council (IGBC)

hereby precertifies

Group Housing With License No. 91 of 2022 and 92 of 2022, Sector-76, Gurugram

Whiteland Corporation Pvt. Ltd.

(IGBC Registration No. GH2200151)

*The project has demonstrated intent to design and build
high performance building in accordance with*

IGBC Green Homes Rating System

Precertified Gold

September 2022

(Precertification is valid for 3 years, renewed based on six monthly progress updates till certification)

Sharukh Mistry
Chair, IGBC Green Homes

Gurmit Singh Arora
Chairman, IGBC

K S Venkatagiri
Executive Director, CII-Godrej GBC

IGBC Gold Certified



WHITELAND

THE ASPEN



**Nestled Amidst
a Mega
Township**

Ultra Luxurious
3 & 4 Bedroom
Residences





**Timeless
Architectural
Design Offering
Conceivable
Luxury**



**Spacious Layouts
with Maximum
Efficiency**

Vastu Compliant Architecture





Breathtaking
Views of the
Aravalli Range
&
City's Skyline



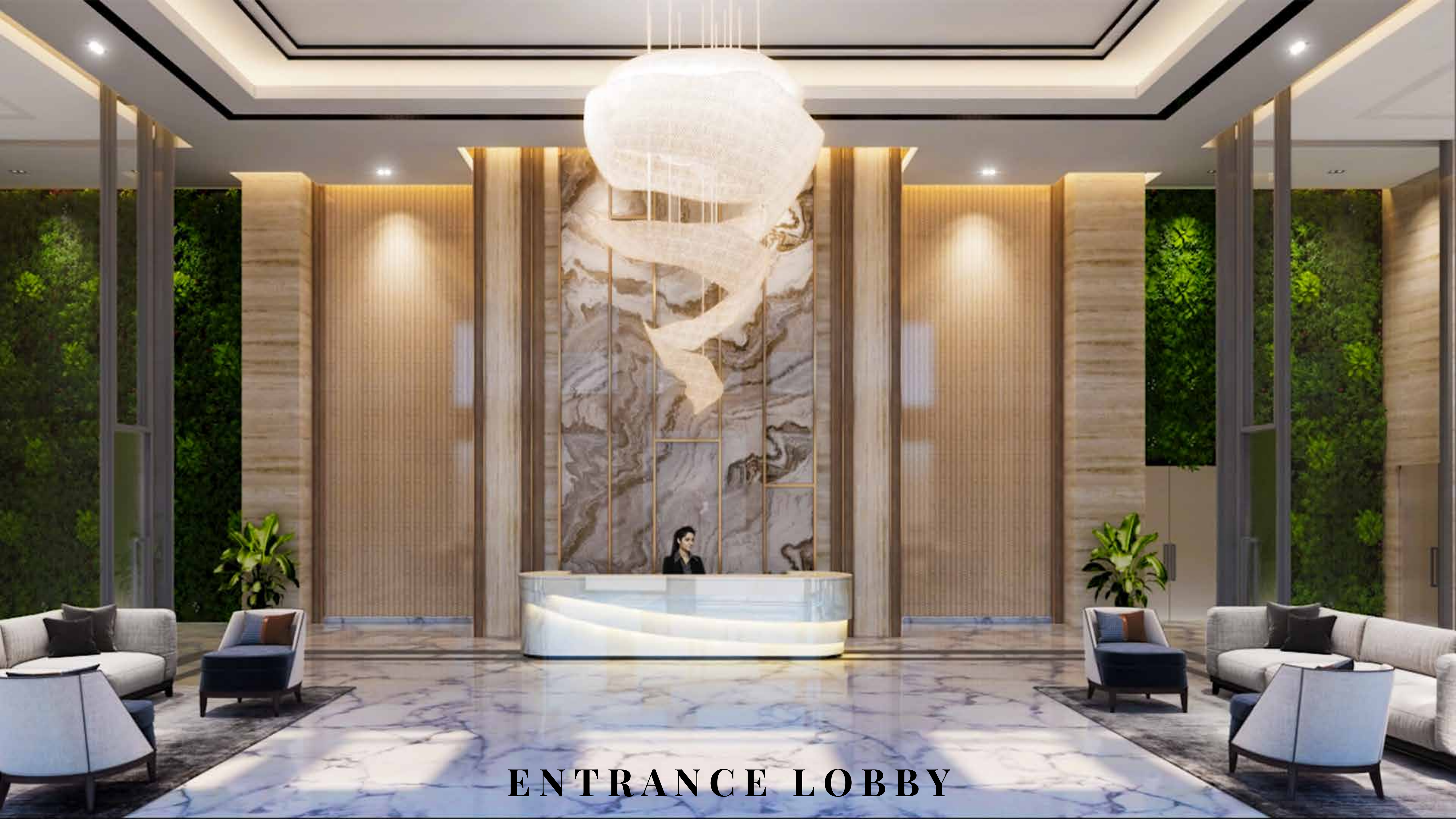
2 to a Core Units on Every Floor



Y mark
our
presence



Drop-Off Lobby



ENTRANCE LOBBY



World Class Amenities & Unending Excitement at
Jewel Theme Clubhouse







Multifunctional Gymnasium

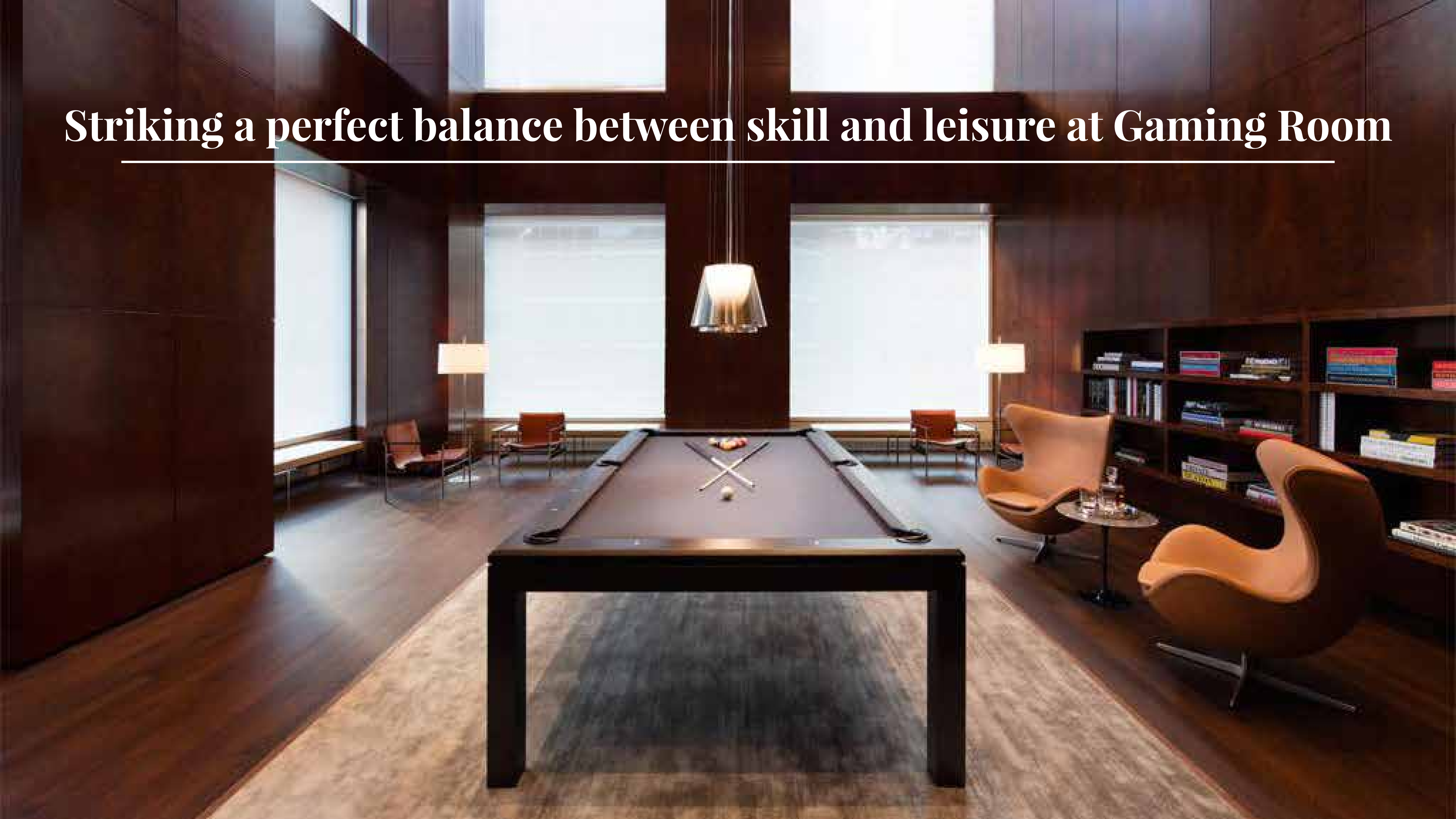


Unleash the game spirit at Indoor Badminton Court



Indulge in unparalleled culinary experience at Multi Cuisine Restaurant

Striking a perfect balance between skill and leisure at Gaming Room



Magnificent Cinema Experience



Gastro Pub & Bar



Bowling Alley

A low-angle, close-up shot of a person's legs and hand holding a blue bowling ball on a bowling alley lane. The person is wearing blue jeans and a red and black plaid shirt. The bowling ball is held in their right hand, suspended in the air. The lane is made of polished wood and is illuminated by warm, golden light. In the background, other bowling lanes and the interior of the bowling alley are visible, with a purple and blue color scheme. The text "Bowling Alley" is written in a white, serif font in the upper right corner, underlined.



Dive in Azure Pool



Exuberant & Lavish Lifestyle at
Sunken Theme Clubhouse



Timeless Design



Vastu
Compliant











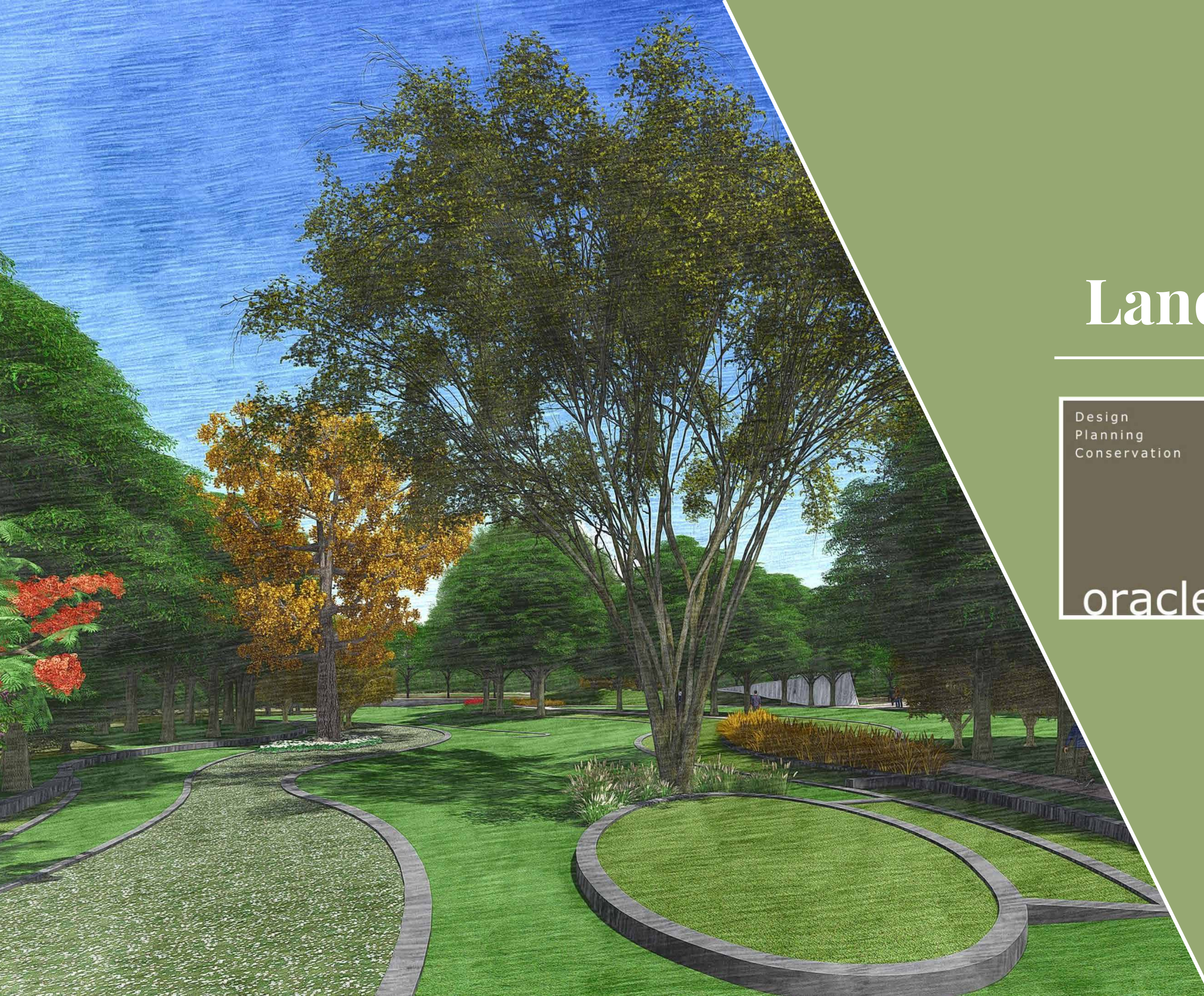


MODERN INTERIOR WITH HIGH-END FIXTURES





Panaromic Landscapes



Landscape Architect



Associate Partner:
Christopher Jones

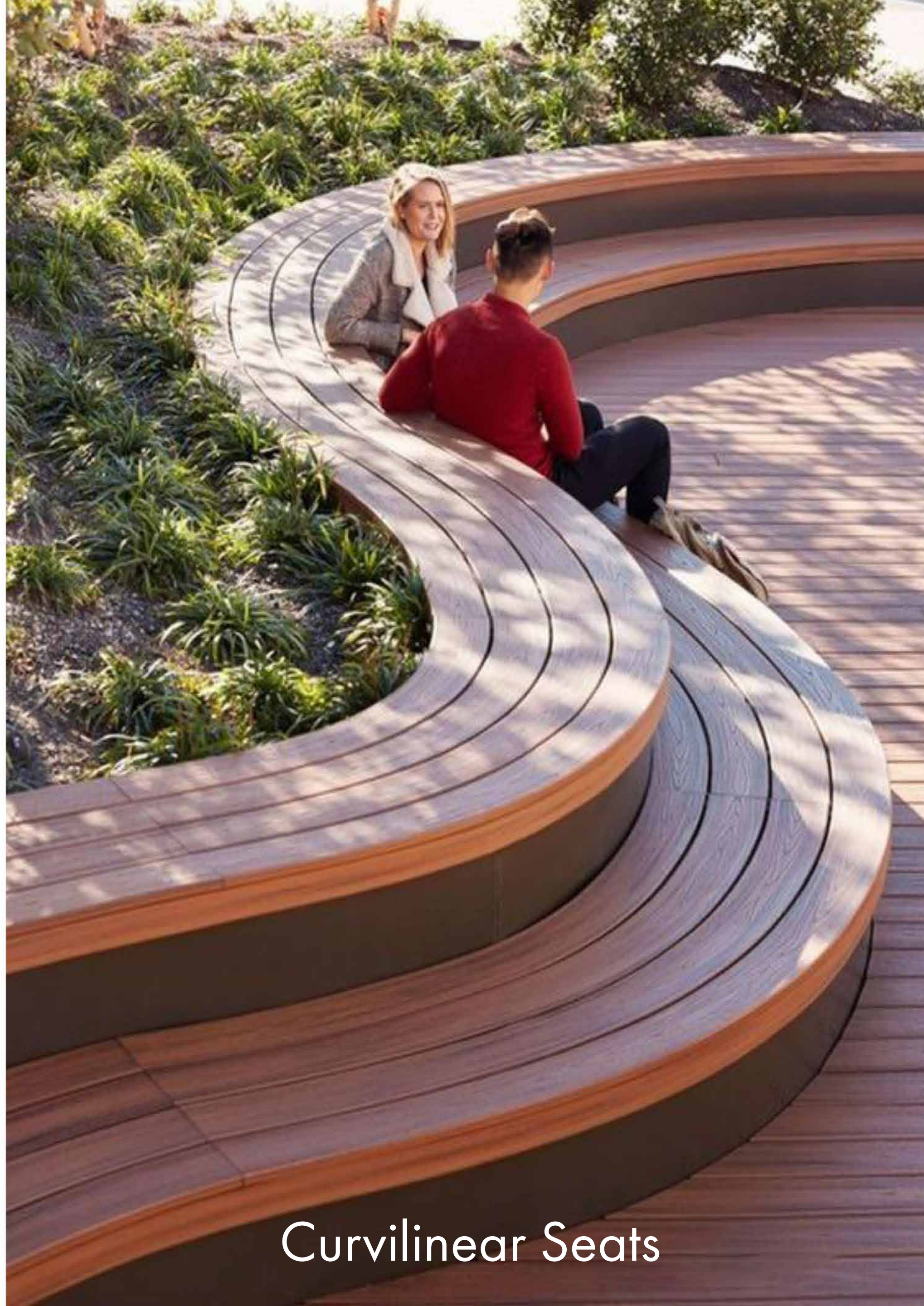
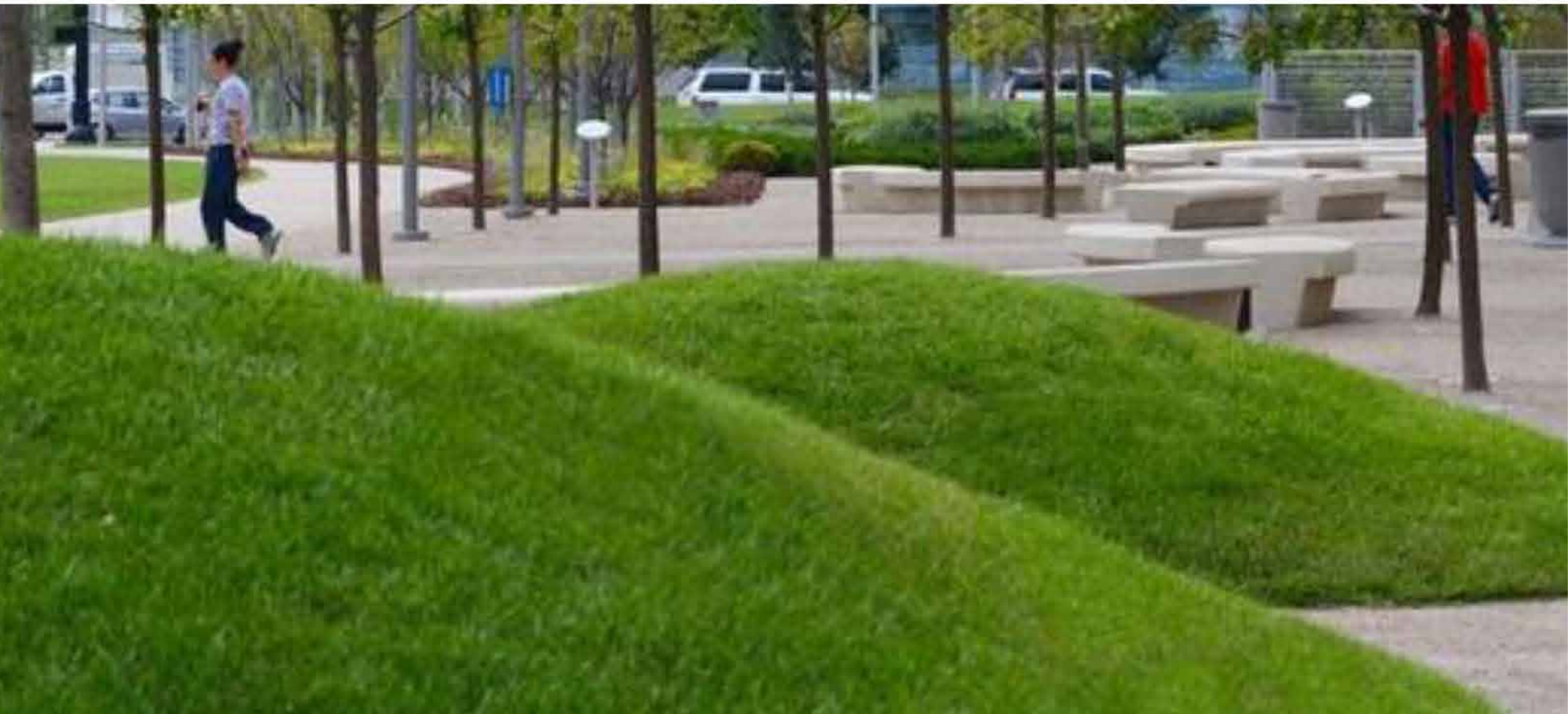




Linear Park



Pathway moving through mounds



Curvilinear Seats



Steps to Summit



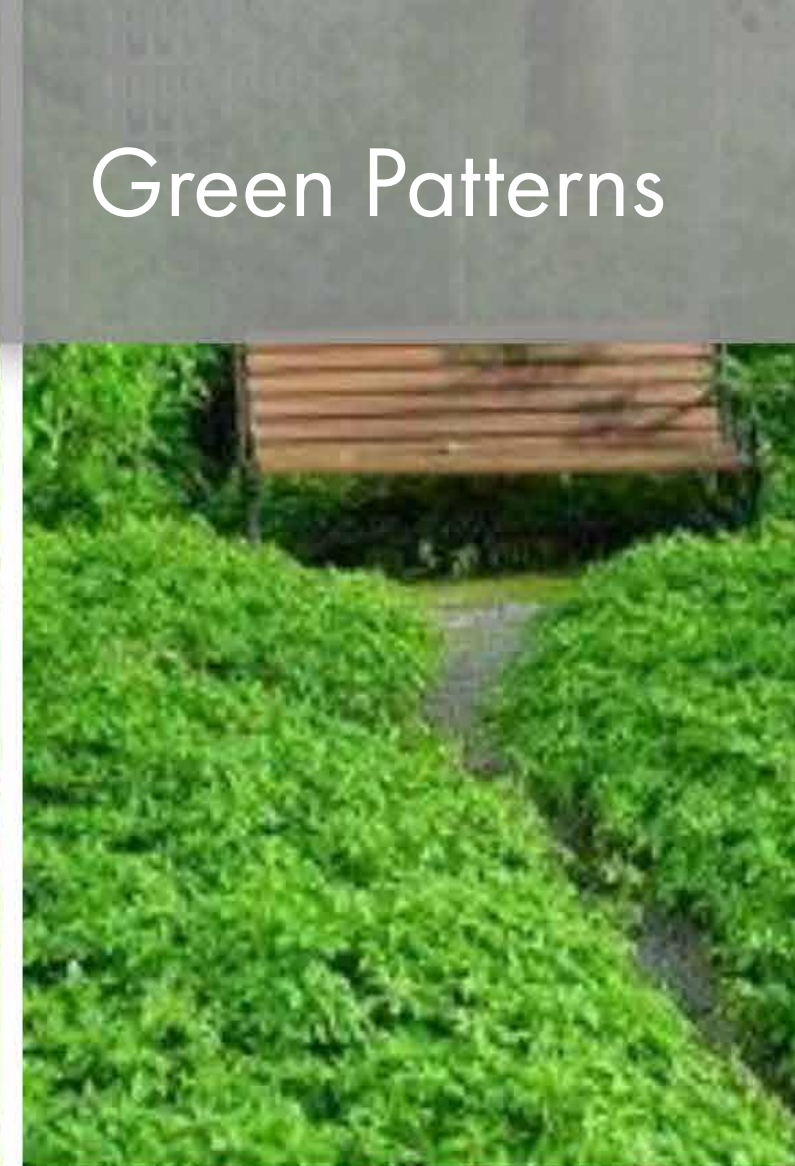
Primary Walkway
and it's edges



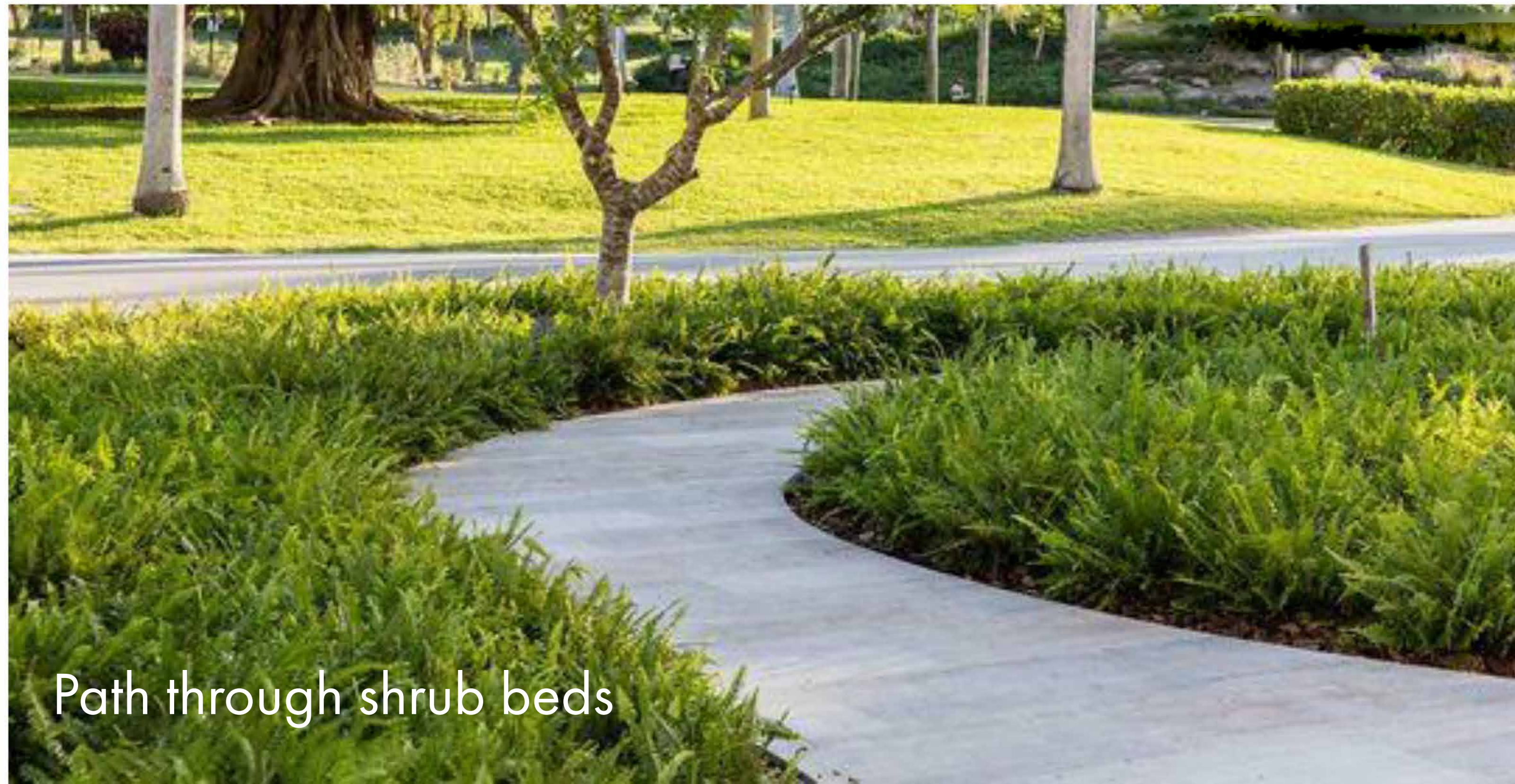
Reflexology Court



Yoga Lawn



Green Patterns



Path through shrub beds

A close-up photograph of a person's hands working on architectural blueprints. The person is using a black pen to draw on the plans, which are spread out on a table. A wooden ruler is visible in the foreground, and another person's hand is seen pointing at the drawings. The background is softly blurred, showing more of the workspace and another person. A dark, semi-transparent rectangular box is overlaid in the center of the image, containing the text "Spacious & Efficient Layouts" in a white, serif font.

Spacious & Efficient Layouts

SOAK IN ASTONISHING VIEW FROM WRAP AROUND PATIO



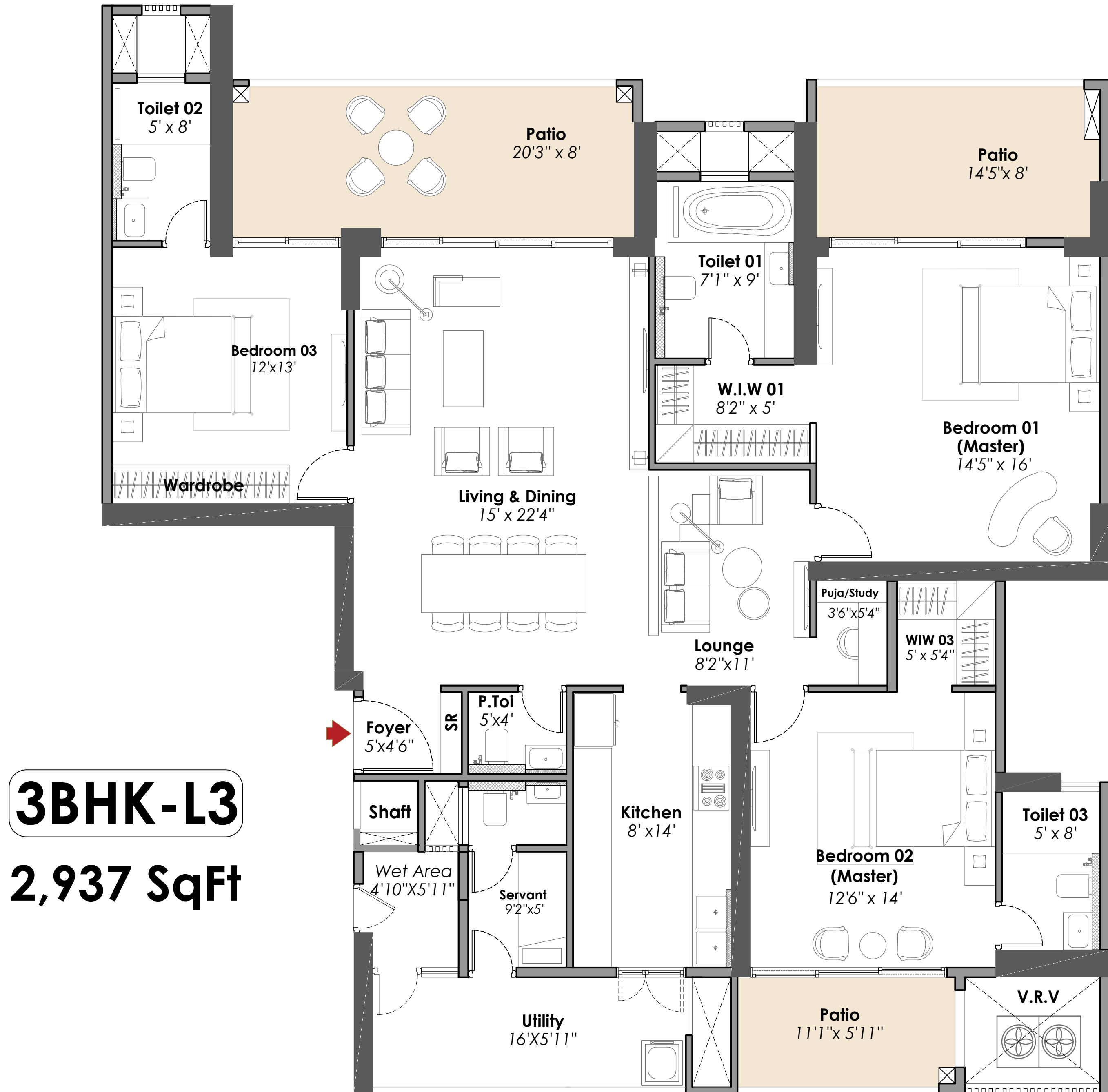


Enjoy the view with different hues at spacious patio

T7

(SECTOR-2)

Typical Floor Plan



3BHK-L3

2,937 SqFt

T6

(SECTOR-2)

Typical Floor Plan



4BHK-S3

3,680 SqFt

T8

(SECTOR-2)

Typical Floor Plan



4BHK-L2

4,054 SqFt

T5

(SECTOR-2)

Lower Level Plan

PENTHOUSE - DUPLEX

4 BHK L2
(Duplex)
7,582 SqFt



T5

(SECTOR-2)

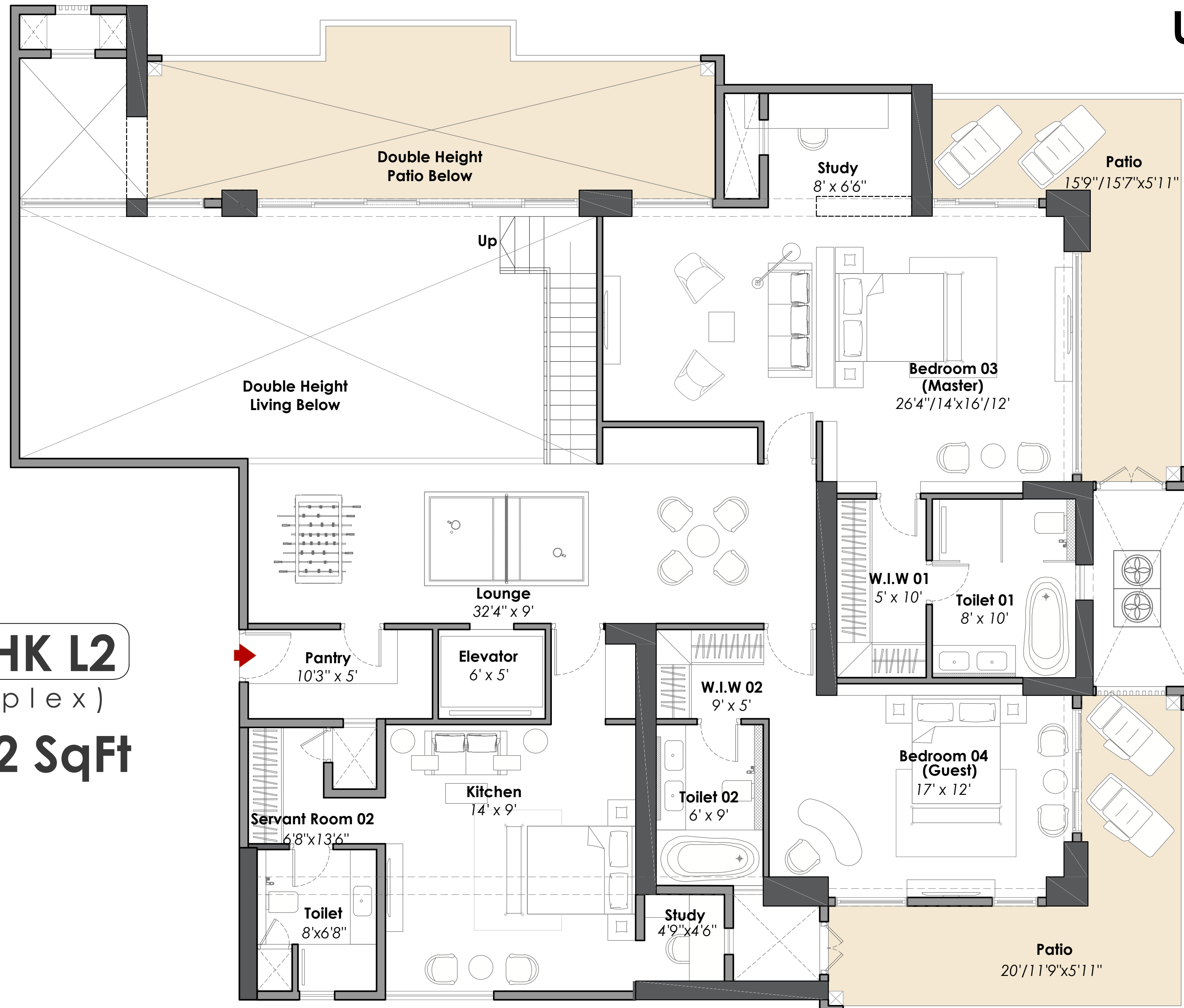
Upper Level Plan

PENTHOUSE - DUPLEX

4 BHK L2

(Duplex)

7,582 SqFt





**PROFESSIONAL & SKILLED
RESOURCES ON BOARD**

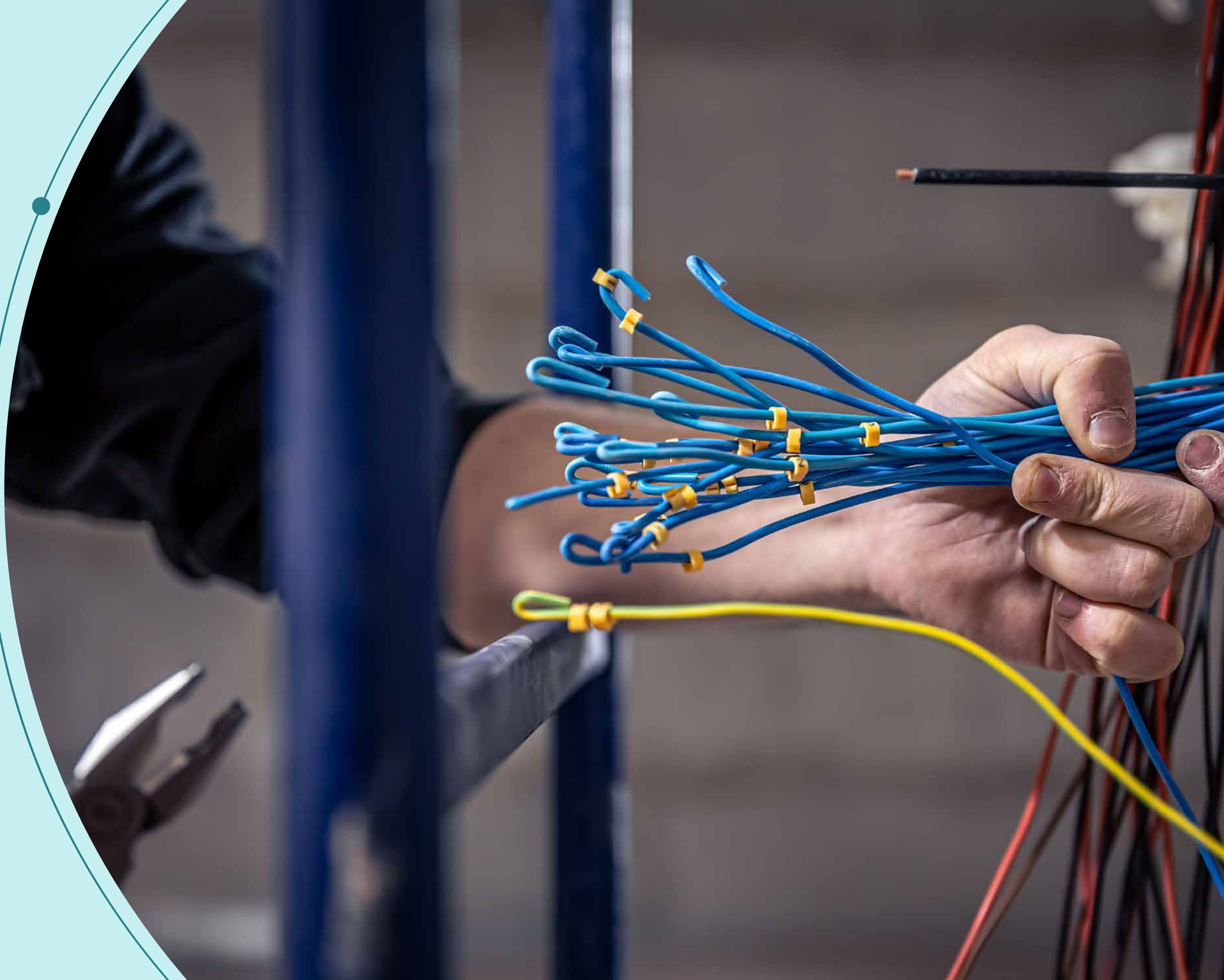


Structural Engineer

VINTECH
CONSULTANTS
CONSULTING ENGINEERS
& PROJECT MANAGERS

MEP Consultant

SANELAC





Construction
Partner

A Grade
Contractors

Traffic Consultant



Transportation & Traffic
Engineering Consultants



COME HOME TO ASPEN

Disclaimer: All information, images and visuals, drawings, plan or sketches shown in this advertisement are only an architect's impression, representative images or artistic renderings and not to scale. Nothing contained herein intends to constitute a legal offer and does not form part of any legally binding agreement and/or commitment of any nature. The company endeavours to keep the information up to date and correct. Recipients/ viewers are advised to exercise their discretion in relying on the information shown/ provided and are requested to verify all the details, including area, amenities, services, terms of sales, payments, price, and other relevant terms independently with the Sales Team/ Company, have thorough understanding of the same and take appropriate advice prior to concluding any decision for buying any Unit(s) in the project. w/corp.com HARERA No. 7 of 2023 Dated 12.01.2023 | License No. 91 & 92 of 2022.